



ADDRESS OF TECHNOLOGY EST.
FOR SECURITY

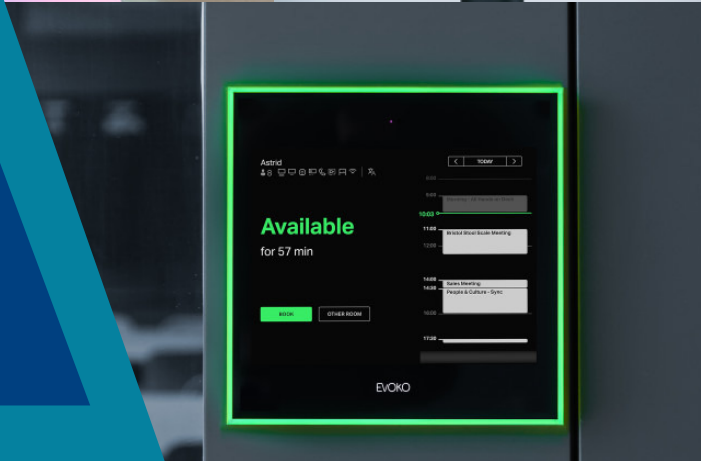
Company Profile 2024

Your Trusted Solution Integrators for Best-
in-Class Technology Solutions

As Solution Integrators, we provide the best-in-class
technology solutions to our customers through a variety of
leading technology and service providers.

 www.at-est.com

Scan Now!



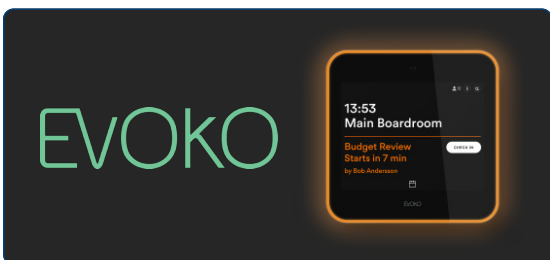
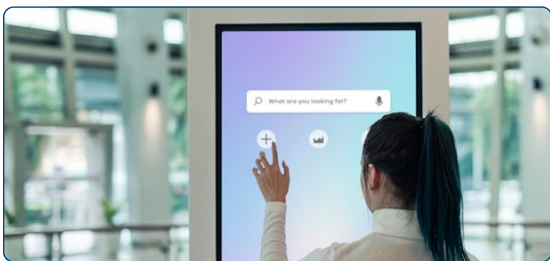
ADDRESS OF TECHNOLOGY EST. (ATE) FOR SECURITY

About Us

Address of Technology Est. (ATE) for Security is a low current solutions provider, providing services for over 7 years all across the Kingdom of Saudia Arabia. As solution integrators, we have fostered significant ties with leading technology suppliers and service providers which play an instrumental role in delivering top-tier technology solutions to our valued clients. Over the years, we've grown our multi-national supplier base with Watchnet, Panasonic, Dynascan, Evoko, Opticon, Avaya, GDS Diplasy, eKiosk, Soltec, Sharp, Smart Class by Robotel and many more.

As integrators, ATE takes pride in delivering tailored solutions that precisely address our clients' challenges. Our dedication to providing tangible benefits to our customers, guiding them through the intricacies and risks of the entire lifecycle and enhanced security is what sets us apart.

ATE aims to provide fundamental benefits of technology solutions to enhance productivity nationwide. We strive to demonstrate measurable ROI, mitigate risks and lower costs - all with consistency and due diligence.



Our Clients

MÖVENPICK
HOTEL & RESIDENCES
HAJAR TOWER MAKKAH



Saudi Can Company
Founded in 1979



شركة عبد الله هاشم المحدودة
ABDULLAH HASHIM COMPANY LTD
MACHINERY DIVISION

وزارة الشؤون
البلدية والقروية
Ministry of Municipal & Rural Affairs



نفت
NAFT



Our Partners

SHARP

Panasonic

EVOKO

HIKVISION

dahua
TECHNOLOGY

AVAYA

TISO

ZKTeco

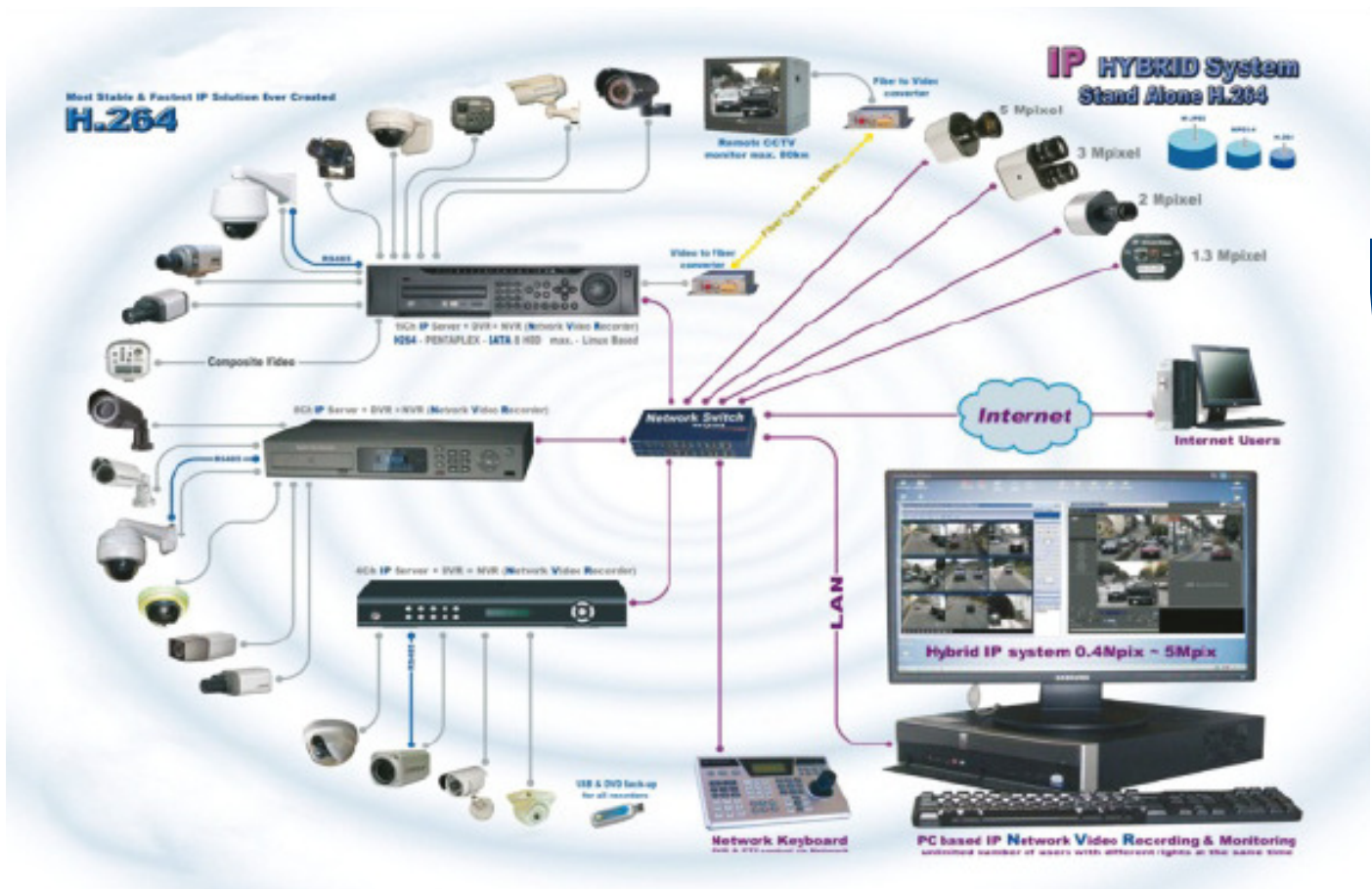
IDEMIA

GRANDSTREAM

ÖZAK

CCTV Solutions

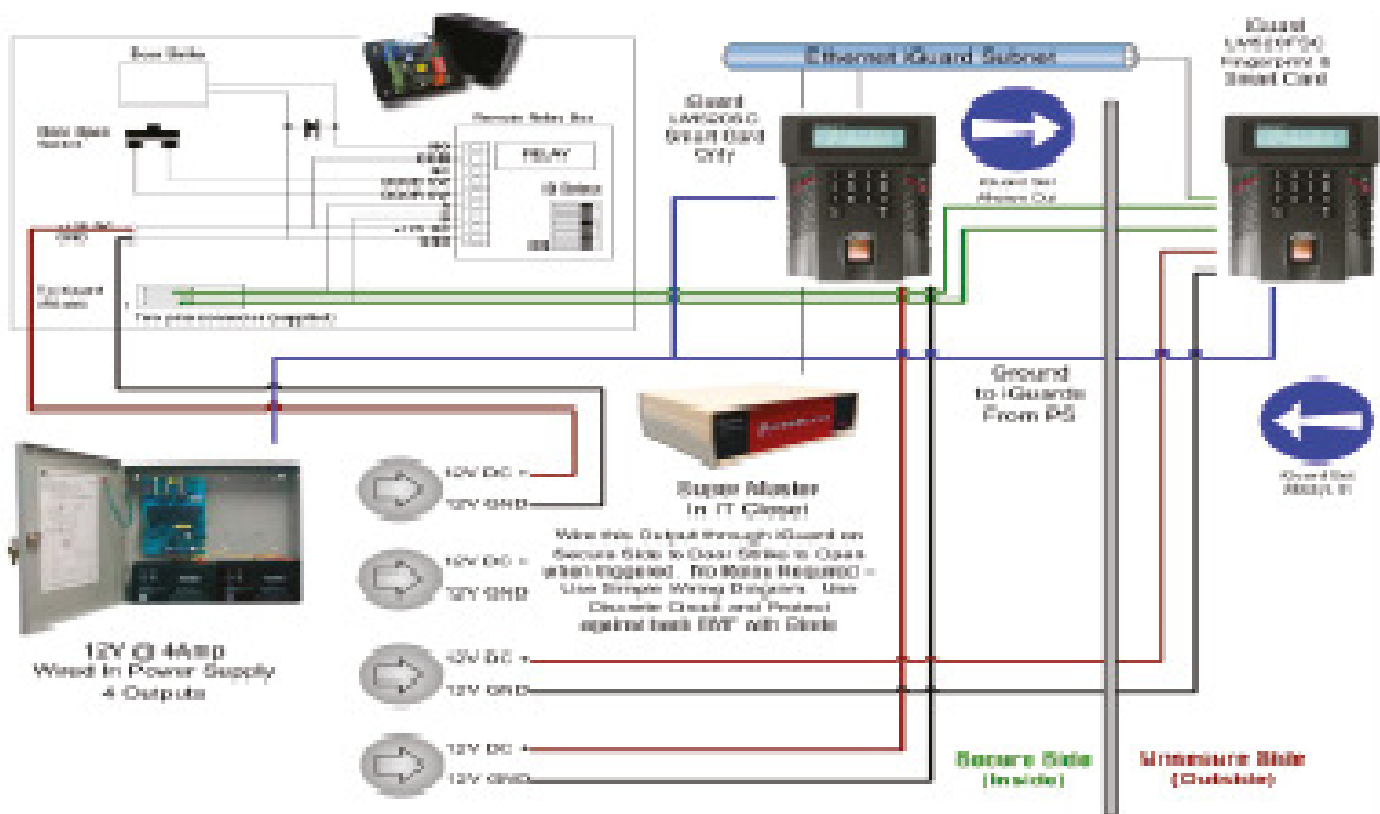
- ◆ IP & Analog System
- ◆ IP Megapixel Cameras
- ◆ Indoor outdoor Day/Night Cameras
- ◆ DVR & NVR System
- ◆ Storage Devices & Servers
- ◆ Video Management Software



Access Control System

- ◆ Network Controllers
- ◆ Proximity Readers
- ◆ Proximity Cards and Tags
- ◆ WAC Software Series
- ◆ Biometrics
- ◆ Installation Accessories
- ◆ Communication Accessories
- ◆ Access Control Server

Our extensive background in security devices has given us the expertise to evaluate your requirements and provide the right security solutions. These options will also take into account the expansion possibilities carefully considering the growth of the facility.



Wiring Diagram - iGuard Setup for Access Control & Egress © 2007 Armonia Solutions Group

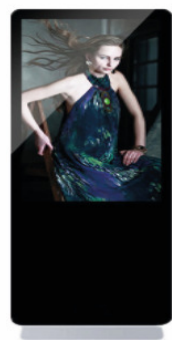
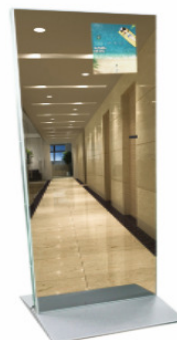
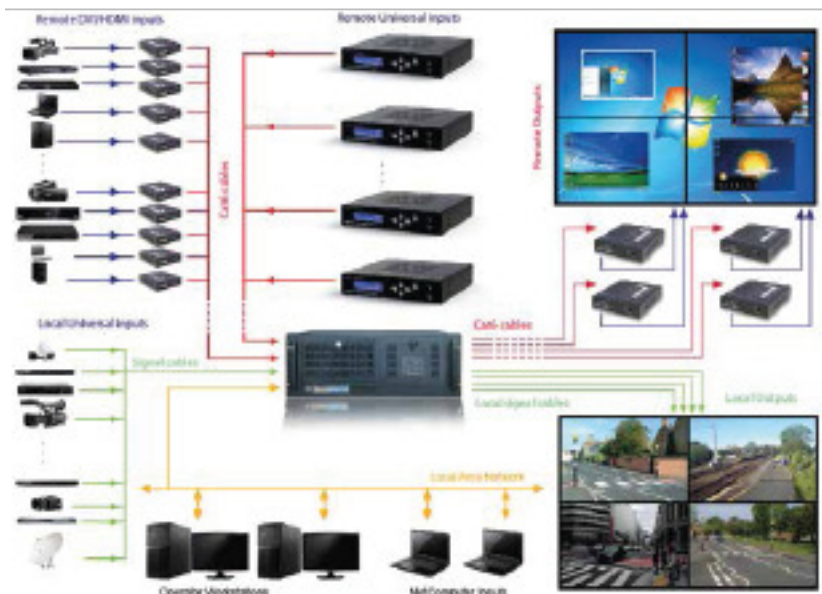
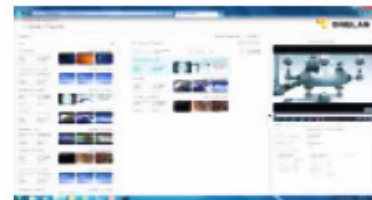
www.guardlink.com

Digital Signage

We offer a wide range of Digital Signage and Digital Display solutions across many applications including education, retail, commercial and government applications.

Our Digital Display options include:

- ◆ Turnkey Digital Signage Solutions
- ◆ Managed Digital Signage Solutions
- ◆ Hosted Digital Signage Solutions
- ◆ Video Wall Displays
- ◆ Signage Processors
- ◆ Signage Controller
- ◆ Signage Software

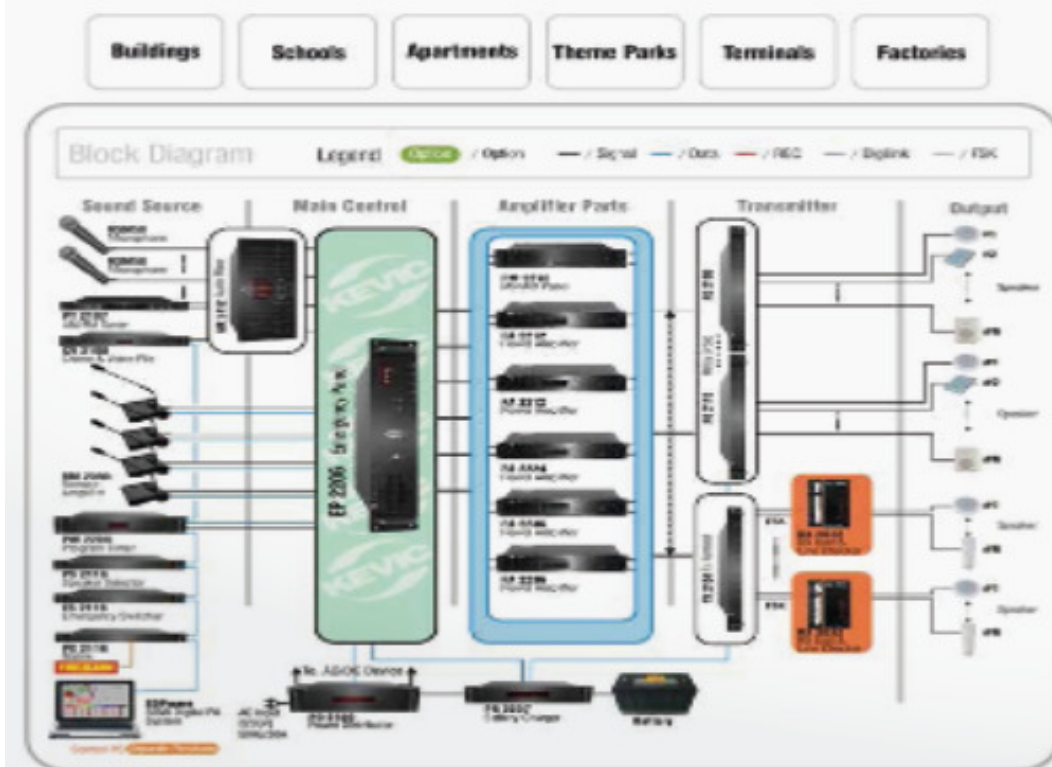
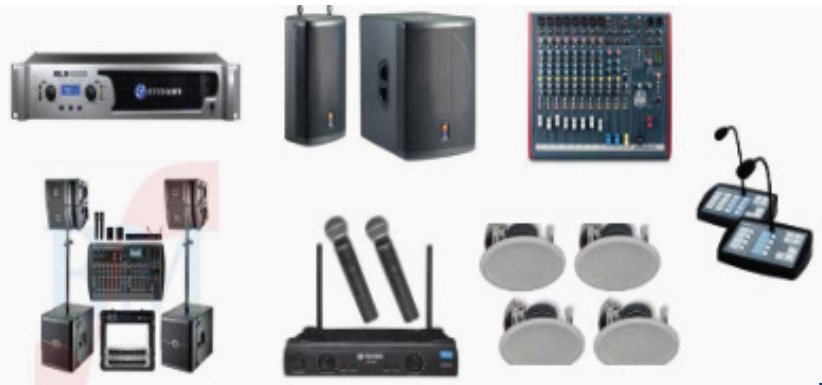


Public Address & Professional AV System

Our ideal solutions for small-to-midsized locations focus on versatility, reliability and ease of use. Our fully digital public address, voice evacuation systems meet all the requirements placed by professional users. Our Microphones offer impressive audio performance for public addresses and many other applications. Our loudspeakers provide an overall lower cost of ownership. All of its acoustical products meet, or exceed, international standards.

Our Solutions are Suitable for:

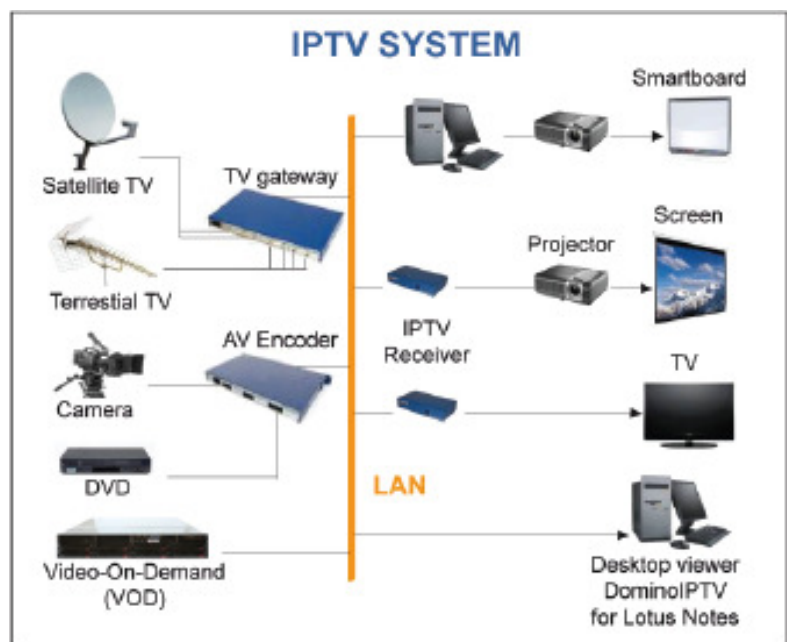
- ◆ Hospitals & Clinics
- ◆ Malls
- ◆ School/ Colleges/ Universities
- ◆ Mosque
- ◆ Banks
- ◆ Airports
- ◆ Factories



IP TV Solution

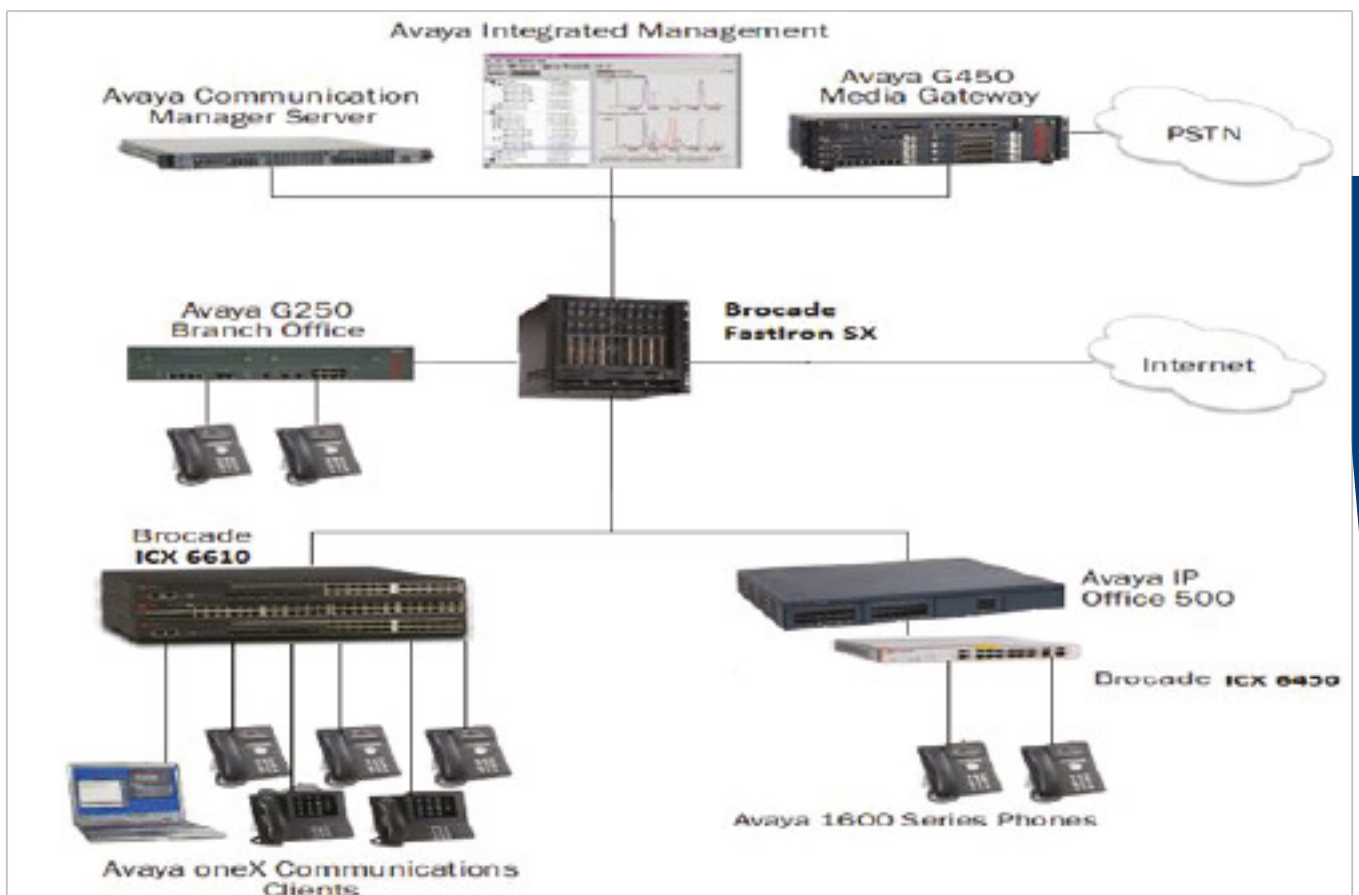
ISTREAMS provides, for the needs of its IPTV and Digital Signage Solution, a brand new STB based on the Android Operating System. This STB based on Hisilicon 3798 chipset integrates Mali 400 Mhz GPU Wifi, Ethernet Connection, 4 GB SDRAM memory and a standard IR remote control as well. It also comes with a 2.4Ghz keyboard or flymouse. ISTREAMS introduces a VOD Server in its product line for Digital TV IP systems. This product has been particularly adapted to Hospitality, Exhibition Centres, and Corporate or Education markets. The main benefits of this system are its opening to all kinds of client applications, its "easy to use" specificity, and its very competitive price.

- ◆ VOD Server
- ◆ User Account Management
- ◆ FileStreaming
- ◆ VOD Recorder
- ◆ Permanent Recorder
- ◆ Middleware for SD and HD TV



Avaya PBX System

- ◆ Avaya Aura® Platform
- ◆ Avaya IP Office™ Platform
- ◆ Avaya Breeze™ Platform
- ◆ Avaya Pod Fx™
- ◆ Avaya Aura® Conferencing
- ◆ Avaya Scopia® Desktop and Mobile Applications
- ◆ SDN Fx™ Architecture
- ◆ Fabric Connect
- ◆ Phones



Meeting Room Management

EVOKO

The next-generation room manager

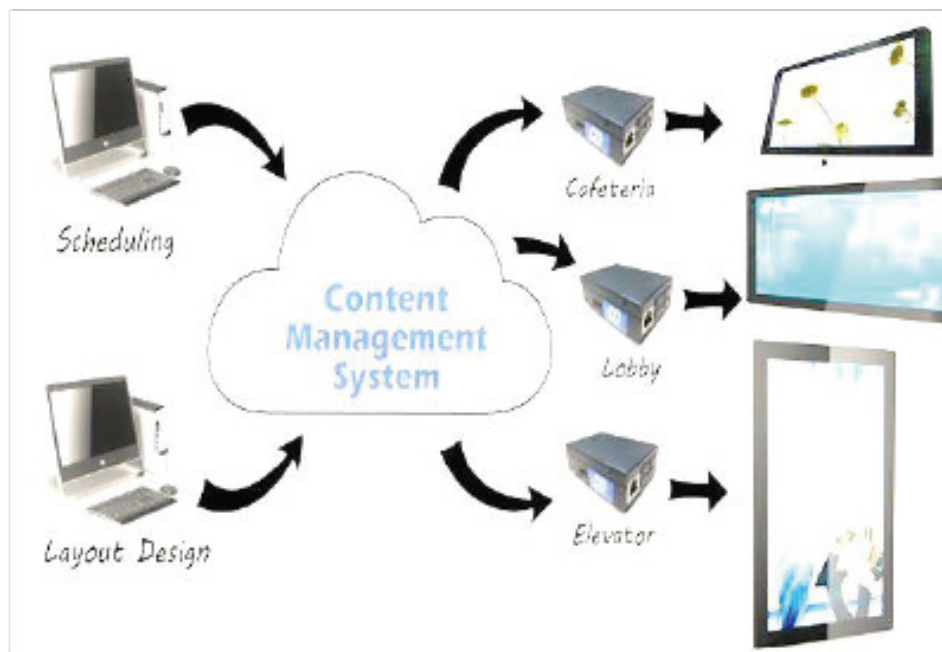
- ◆ Evoko Liso makes it easier than ever to book a room with your favorite digital calendar, or directly on the screen using your fingertip
- ◆ Evoko Liso's open API integrates smoothly with other 3rd party systems. You could, as an example, get the AC turned on 10 minutes before a meeting is scheduled to start.
- ◆ Evoko Liso has a new, slim design. It's easy to install and a true delight to look at outside every meeting room



Elevator Display Screen

Elevator Display Screen

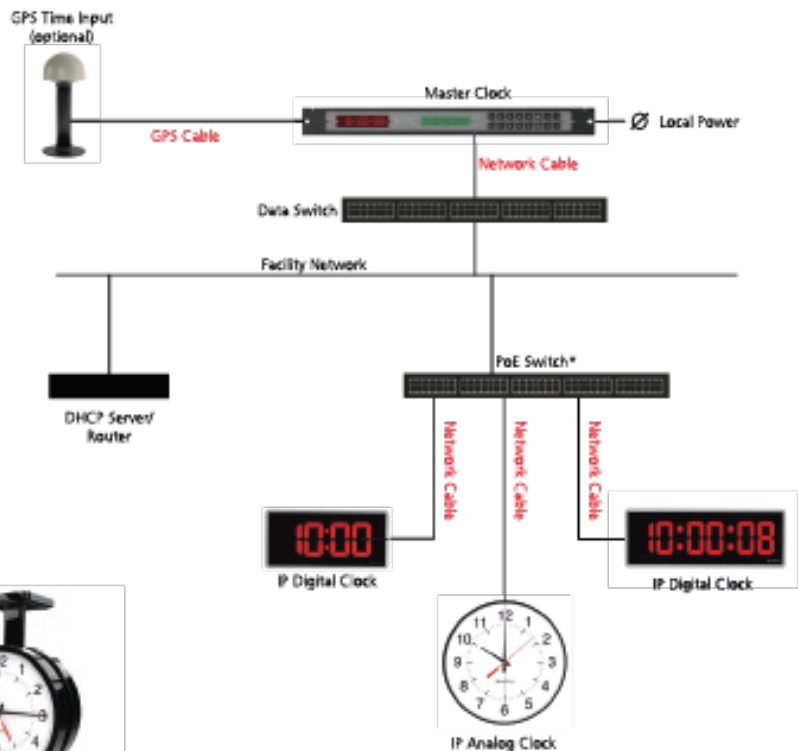
- ◆ Elevator display screens are used for display advertisement purposes. We provide this solution for any type of elevator



Central Clocking System

- ◆ Wireless Clocks
- ◆ Talkback Wireless Clock
- ◆ IP Clocks
- ◆ Time Zone Clocks

Independent Clocks Sapling offers school clocks, hospital clocks, elapsed timers, 115VAC, or 230VAC – and clock systems for manufacturing plants, business complexes, transportation facilities hotels and many other industries. We also offer a time zone clock that can be powered via PoE, 24V.



Safety Solutions

Above Ground Tyre Killer



- ◆ Allows one-way traffic only
- ◆ Easy to install
- ◆ Mechanical movement spikes with a counterweight
- ◆ Anti-corrosion treatment and painted
- ◆ Provides high-level security along with other security equipment

Below Ground Tyre Killer

- ◆ Mechanical movement spikes with counterweight
- ◆ Allows one-way traffic only
- ◆ Easy to install
- ◆ Anti-corrosion treatment and painted
- ◆ Provides high-level security along with other security equipment



High Security Shallow Road Blocker



- ◆ PAS68 and IWA 14-1 physically crash tested
- ◆ Low maintenance cost and fast operation
- ◆ Manual operation at power failure
- ◆ It is powered by a hydraulic power unit with speed between 3-5 s

- ◆ Hybrid technology: Hydraulic + Brushless motor
- ◆ Compatible to Integrated with any 3rd Party Access Device
- ◆ High opening speed: From 1.5 seconds for 2m gateways up to 6 seconds for 8m gateways
- ◆ Protection Class: IP56 (TUV Certified)

Hydraulic Barrier



Safety Solutions

Road Bollard



- ◆ Heavy-duty and high-quality hydraulic system
- ◆ Manual operation at power failure
- ◆ Certified PAS68, M50, M30, K8, K4
- ◆ Raised Height 500 – 1200mm
- ◆ Available with Different Diameters 273 – 355mm

- ◆ Heavy-duty steel structure, blasted, primed and painted
- ◆ Manual operation at power failure
- ◆ Hydraulic system including hand pump in case of power failure
- ◆ Operating Speed 4-6s
- ◆ Blocking length 2000 – 6000 mm

Standard Road Blocker



Turnstiles



- ◆ Aesthetic and effective control of entry or exit
- ◆ Access control to private, public, governmental areas
- ◆ Operational mechanics does not resemble any other manufacturers
- ◆ Functionality precision provides simpler service and installation
- ◆ Swing Gate Turnstiles designed for the pedestrian and handicapped passages
- ◆ All models can be configured with 2, 3 or 4 winged with straight or U-shaped bars

Sheraton Makkah

Client: Sheraton Hotel- Jabel Kaaba

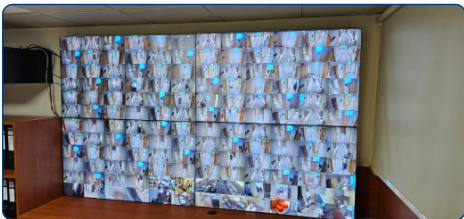
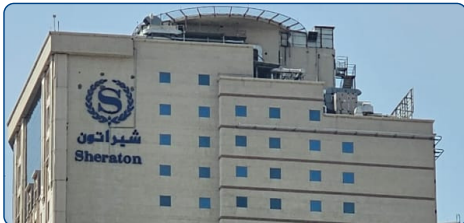
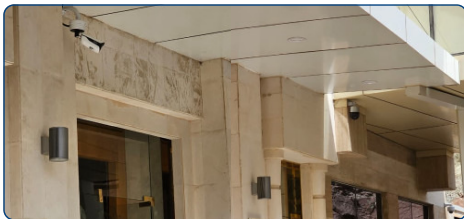
City: Makkah

Project Details

Sheraton Makkah Jabal Al Kaaba Hotel is located in Makkah, within 1 km from Abraj Al Bait and 570m from Masjid al-Haram, both accessible through its 60m private pedestrian bridge. The property is also 22 km away from Um AlQura University. ATE worked diligently and efficiently to intricately install cameras within the hotel's vicinity.

Product Installed:

- ◆ 215 pcs - Dahua IP CCTV Cameras including
 - PELCO IP cameras Integration with DSS Software
 - Video wall



Dahua IP CCTV System

Client: World Islamic League

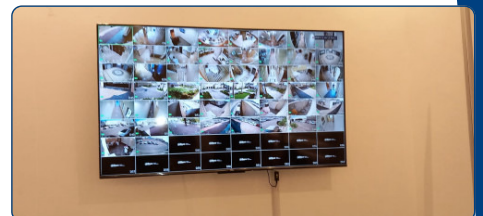
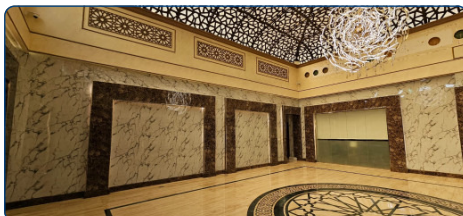
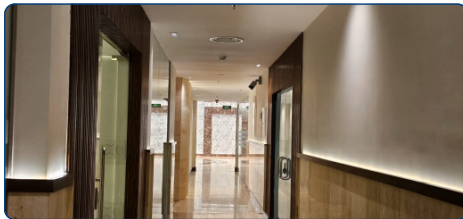
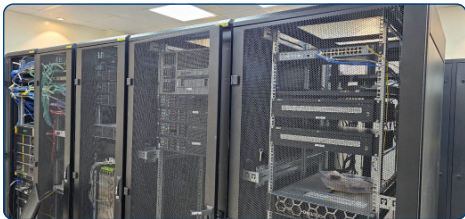
City: Jeddah

Project Details

World Islamic League is an international Islamic NGO based in Mecca that works as a mouthpiece for the Saudi Arabian government and finances it. It works for the advancement of a moderate form of Islam, promoting peace, love and tolerance globally. ATE had the privilege of partnering with them, as we designed a rigorous CCTV system to ensure top-tier security across the landmark.

Product Installed:

- ◆ DELL PowerEdge R750xs Server(PER750XS4A) including DSS Professional VM
- ◆ 4 pcs - 4 × 4 MP Multi-Sensor Panoramic Bullet Wizmind Network Camera
- ◆ 25 pcs - 8MP IR Vari-focal Dome WizSense Professional Network Camera
- ◆ 4 pcs - 64 Channels 2U 8HDDs WizMind Network Video Recorder
- ◆ 22 pcs - 12MP IR Bullet WizMind Professional Network Camera
- ◆ 1pc - Access ANPR Camera for Car Plate
- ◆ APC UPS for 6hrs Backup



Tin Can Factory

Client: Saudi Can Co. Ltd

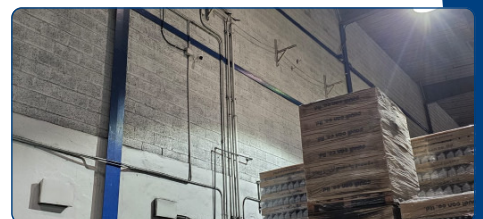
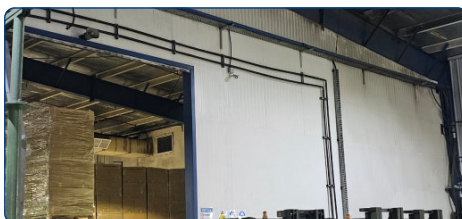
City: Jeddah

Project Details

Saudi Can Co. Ltd, founded in 1979, started with the manufacture of three-piece printed tin cans for the Lube Oil Industry. It later developed into a fully diversified packaging company. It has been providing packaging services to renowned brands all across the kingdom and has expanded astronomically over the last 20 years since its revolution.

Product Installed:

- ◆ 80 pcs - Dahua IP CCTV Cameras with DSS Software
- ◆ Video wall in GM Room



IP CCTV- Yanbu Factory

Client: Saudi Can Co. Ltd - Yanbu

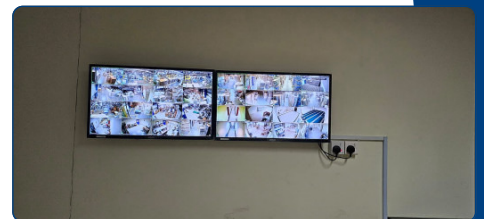
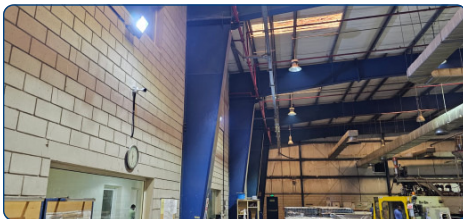
City: Yanbu

Project Details

Saudi Can Co. Ltd - Yanbu, is a project of Saudi Can Co. Ltd. Over the course of potential growth in the past year from Jeddah, Saudi Can establish a new project to populate their factory in the city of Yanbu.

Product Installed:

◆ 48 pcs - Dahua IP CCTV Cameras



Digital Signage

Client: Mövenpick Hotel (Makkah Clock Tower)

City: Makkah

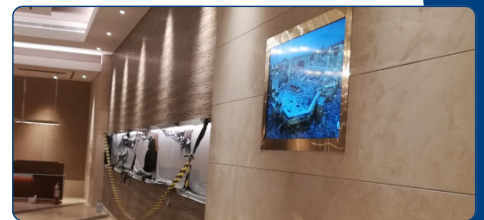
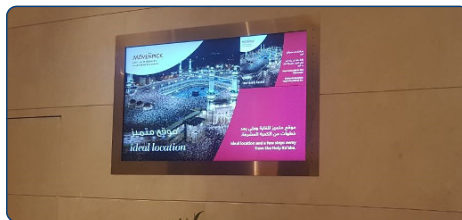
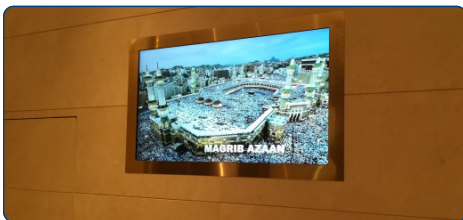
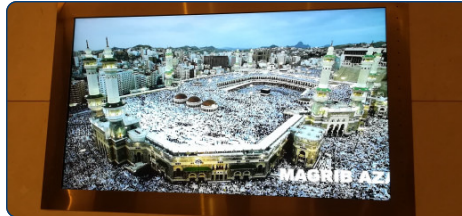
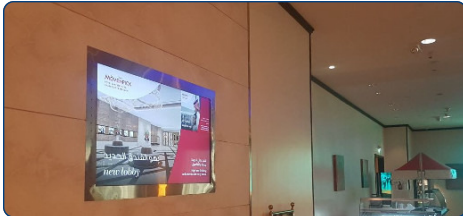
Project Details

Mövenpick Hotel is a Swiss hotel management company headquartered in Baar, Switzerland. With over 35 years of experience and 72 locations on two continents, Mövenpick Hotel also has multiple luxurious locations across Kingdom of Saudi Arabia. Address of Technology (ATE) provides state-of-the-art digital solutions for their Makkah location.

Product Installed:

◆ Sharp centralized Digital Signage Solution, including:

- 7 pcs - 55" Displays with software



Evoko Meeting Management Room

Client: Tamer Group

City: Jeddah

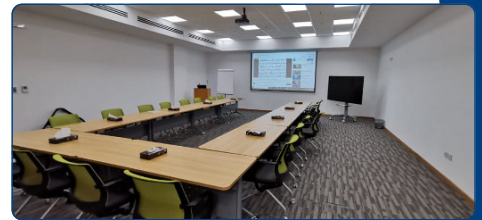
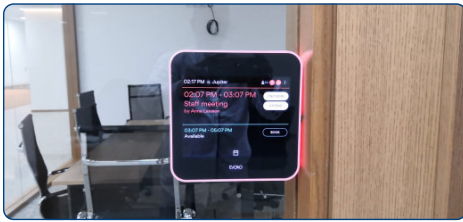
Project Details

Tamer Group is a leading healthcare, beauty care, prestige products, and fast moving consumer goods company responding to the growing needs of the Saudi Arabia and Middle East communities. Being an infamous group that holds numerous meetings every day, Address of Technology proposed Evoko solutions to streamline meetings and conferences as we installed Meeting Management products across all conference and executive rooms.

Product Installed:

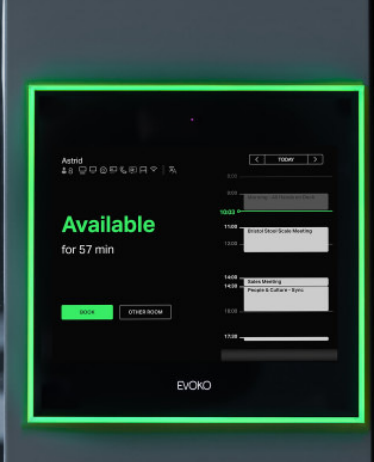
◆ Sharp centralized Digital Signage Solution, including:

- 30 pcs - Evoko Liso





ADDRESS OF TECHNOLOGY EST.
FOR SECURITY



Contact Us



www.at-est.com



+966-530071199



info@at-est.com



Al Odabaa Commercial Center 2nd
Floor Office # 8, Al-Aziziah
Dist Jeddah Saudi Arabia.

Scan Now!

